

DERRY HILL AND  
STUDLEY MATTERS

inSPIRE



December 2023 / January 2024

The Parish Magazine of Christ Church Derry Hill



# wec

**WILTS ELECTRICAL CONTRACTING Ltd**

**FOR ALL YOUR ELECTRICAL, PLUMBING  
& RENEWABLE REQUIREMENTS INCLUDING ELECTRIC  
VEHICLE CHARGING**

Electrical: Rewires, Alterations, LED Lighting, Test  
& Inspecting, Domestic, Commercial,  
Industrial & Agricultural

Plumbing: Refurbishment, Central Heating, Hot  
Water & General Repairs, Wood Burners  
& Flue Installations

Renewable: Solar PV & Battery Storage, Solar Hot  
Water, Air/Ground/Water Source Heat  
Pumps & Biomass Boilers

**Electric Vehicle Charging including Government Funding  
through the EVHS OZEV Scheme**

**Wilts Electrical Contracting Ltd,  
10 Harris Road, Porte Marsh Ind Est, Calne, Wiltshire,  
SN11 9PT, TEL: 01249 812850,**

**Email: [enquiries@weclimited.co.uk](mailto:enquiries@weclimited.co.uk) [www.weclimited.co.uk](http://www.weclimited.co.uk)**



## MAGAZINE PRODUCTION TEAM

Editor	Richard Aylen	01249 814632
Advertising Coordinator	Jacqui Bonardi	07743596203
Distribution Coordinators	Belinda Tanner Kevin Rowland	07856656034 01249 320905
Webmaster/Composer	Ian Liddle	01249 816229
Proof Reader	Cathy Liddle	

Please send articles and other correspondence to:

Mr Richard Aylen

[inspireeditor@outlook.com](mailto:inspireeditor@outlook.com)

Please send advertisement copy and related correspondence to:

Mrs. Jacqui Bonardi [inspireadcord@gmail.com](mailto:inspireadcord@gmail.com)

## EDITORIAL POLICY

Any opinions expressed in this publication are those of the individual writers and are not necessarily the policy or opinion of this publication or its editor. All articles submitted for publication are subject to editing.

By submitting content, contributors warrant that the content they submit to us is not obscene, threatening, harassing, libellous, deceptive, fraudulent, and invasive of another's privacy, offensive, defamatory of any person or illegal goods and services advertised within their statutory rights.

We accept no liability in respect of any content submitted by users and published by us or by authorized third parties.

The deadline for inclusion of material in **next** month's magazine is the **20th** of this month.

## ADVERTISING RATES

All rates are for insertion in 10 consecutive issues of inSPIRE.

Size	Colour	Approximate size of advert (Width by height) (cm)
Quarter page	£45.00	6 by 8
Half page	£90.00	12 by 8 or 6 by 16
Full page	£180.00	12 by 16

Cover photo: Queens Lodge - Bowood – Photo by Richard Aylen

# The Derry Hill Store and Post Office

*National Lottery*

Open every day  
7.00am to 8.00pm

01249 819209

THE LANSDOWNE HALL  
Petty Lane Derry Hill  
**Available for Hire**  
Large Hall, 2 Meeting  
Rooms and Kitchen  
Available for Hire

Preferential rates for local residents  
Derry Hill, Studley and Sandy Lane

**For further information  
and bookings**

**07860 940323**

[www.lansdownehall.org](http://www.lansdownehall.org)

*Odette* Dip ID  
*Funeral Director*

Golden  
Charter



- *Independent family run*
- *Available 24 hours a day,  
7 days a week*
- *Traditional or simple funerals & cremation direct*
- *Award winning pre-paid funeral plans*
- *Memorial stone masonry*
  
- *Discounts to The Calne Branch of the Royal British Legion, Calne Bowls Club, Blue Light and Defence Card holders*



BLUE LIGHT CARD

**DEFENCE**  
Discount Service  
The Official Retail Discount Service

7 Phelps Parade  
Calne  
SN11 0HA  
01249 819972

[www.odettefuneraldirector.co.uk](http://www.odettefuneraldirector.co.uk)

## Editorial

As the year draws to a close, we find ourselves immersed in the enchanting atmosphere of December. The air is crisp, and the villages are adorned with twinkling lights, wreaths, and the joyful sounds of carols. It is a time when our community comes



together to celebrate the magic of Christmas, spreading warmth, love, and goodwill to all and central to all of this is the Christ Child born, and what he came to teach us.

In the midst of all the celebration we should reflect and indeed help those not so fortunate as ourselves. Those suffering from food poverty, fuel poverty and loneliness. One small but important way we can help is donating to the Calne Foodbank. There is a collection point in the church porch in Derry Hill where you can put your donations. Having had a very successful Christmas Fair in the hall, we are waiting with gleeful anticipation for the new Christmas lights switch on event - December 2<sup>nd</sup> down at the Hall with some interesting food and gift stalls in attendance. At the magic moment, the Christmas tree will be lit and hopefully across our two villages the Christmas lights will go on.

As we bid farewell to 2023 and welcome the new 2024, let us carry the spirit of December with us throughout the year. Let us continue to support one another, nurture our community, and embrace the magic that lies within our villages. Together, we can create a place where kindness, compassion, and unity thrive.

Wishing you all a December filled with love, joy, and the warmth of our villages and a brilliant year ahead.

**Editor**

## December 2023 Church Services

Time	Church	Service
<b>Sunday 3<sup>rd</sup> Advent Sunday</b>		
8am	St Mary's, Calne	Holy Communion
10am	St Mary's, Calne	Parish Eucharist
10am	Holy Trinity, Quemerford	Family Service
10am	Christ Church, Derry Hill	Said Communion
10.30am	Christ Church, Derry Hill	Family Service
4pm	St. Martin's Bremhill	Benefice Advent Service
<b>Wednesday 8<sup>th</sup></b>		
10am	St Mary's, Calne	Holy Communion
<b>Sunday 10<sup>th</sup> Advent 2</b>		
8am	St Mary's, Calne	Holy Communion
9.30am	St John the Baptist, Foxham	Holy Communion
10am	St Mary's, Calne	Holy Communion
11am	Christ Church, Derry Hill	Parish Eucharist
5pm	St Mary's, Calne	School Carols
<b>Wednesday 13<sup>th</sup></b>		
10am	St Mary's, Calne	Holy Communion
<b>Sunday 17<sup>th</sup> Advent 3</b>		
8am	St Mary's, Calne	Holy Communion
10am	St Mary's, Calne	Parish Eucharist
10am	Holy Trinity, Quemerford	Family Service
3pm	St Peter's, Blackland	Carol Service
4pm	Christ Church, Derry Hill	Carol Service
6pm	St Mary's, Calne	Carol Service
6pm	St. Martin's Bremhill	Carol Service
<b>Wednesday 20<sup>th</sup></b>		
10am	St Mary's, Calne	Holy Communion
<b>Thursday 21<sup>st</sup></b>		
10am	St Mary's, Calne	Holy Communion

<b>Sunday 24<sup>th</sup> Christmas Eve</b>		
10am	St. Mary's Calne	Spoken Holy Communion
3pm	Christ Church, Derry Hill	Carol and Crib
4pm	St. Mary's Calne	Crib Service
6pm	Bowood Chapel	Carol Service
9pm	St. Martin's Bremhill	Midnight Mass
11pm	St. Mary's Calne	Evensong
<b>Monday 25<sup>th</sup> Christmas Day</b>		
9.30am	St John the Baptist, Foxham	Family Communion
9.30am	St Peter's, Blackland	BCP Communion
10am	St Mary's, Calne	Parish Eucharist
10am	Holy Trinity, Quemerford	Holy Communion by Extension
11am	St. Martin's, Bremhill	Family Communion
11am	Christ Church, Derry Hill	Family Communion
<b>Sunday 31<sup>st</sup> Christmas 1</b>		
10am	St Mary's, Calne	Holy Communion
11am	Christ Church, Derry Hill	Parish Eucharist

**Early years education and  
wrap around setting**

**Early years assistant required**

**Based in Derry Hill**

**Please call Jane Clark 07733231735  
for more information**



## Coming to Church

### Parochial Church Council (PCC) Guidance

We have for some months now been worshipping in church with minimal restrictions regarding Covid, with people making their own choices about wearing face coverings and/or social distancing.

When it comes to Holy Communion, guidance will be given during the service.

Please stay at home if you are feeling unwell or test positive for Covid.



As ever, our Christian calling is to care for all our brothers and sisters, particularly those who are vulnerable; and there are times in our lives when every one of us (and those we have close contact with) is vulnerable. We ask that everyone continues to take extra care during our services and respects the wishes and needs of those around us so that everyone feels comfortable and safe.



## Church Contacts CHRIST CHURCH - DERRY HILL

If you wish to discuss arrangements for Baptisms, Marriages, Funerals or would like a pastoral visit or meeting arranged or need to see a Vicar, then please contact the **Team Administrator**:

Mrs Ann Stiff Tel: 01249 816522  
email: enquiries@mardenvale.org.uk  
Team Office: 30 Church Street, Calne, SN11 0HU  
The office is open Mondays, Wednesdays and Fridays from 9am to 1pm

### Church Wardens

Mr Peter Rigby 01225 704356                      Mr Ian Liddle 01249 816229

### PCC Treasurer (Tr) & Secretary (Sec)

Mr Peter Roycroft (Tr) 01249 660550                      Mrs Lucinda Prater (Sec) 07882 469005

---

## Derry Hill and Studley Community Support

Has been operating since the beginning of lockdown and is continuing to help those who find it difficult to go out.

We offer a range of help from shopping, picking up prescriptions, dog walking or just a friendly confidential chat.

Please get in touch if we can help.

**Email** the dedicated email account:                      **dhsfriend@gmail.com**

**Ring** one of our coordinators:

Carol Rigby                      01225 704356

Ian Liddle                      01249 816229

Richard Gribble                      01249 812018

Richard Aylen                      01249 814632

### *Carol, Ian, Richard A and Richard G*

**Derry Hill and Studley Community Support**

## Annie's Notes



Happy New Year!!! OK so you all think I've got it wrong, it's only December!! However, it is New Year in the life of the Church. The Christian Year begins on Advent Sunday, this year the 3<sup>rd</sup> December, and so I wish you all a very Happy New Year!

And so, Advent begins and runs until Christmas Eve. Advent is a time of preparation, a time for us to think about what is important, a time to put God first and to look forward to celebrating and remembering the joyous birth of the Christ child. How will you prepare I wonder?

I was dismayed to see TV adverts for Christmas starting on the 1<sup>st</sup> November this year – it is time that we put Christ back into Christmas rather than concentrating on materialistic hype and advertisers and shops making as much money out of this very special season as they can! It is so very important to keep a focus on Christ at Christmas. Christ is where it all began and the day, for Him, was simply his birthday – just as yours and mine are. I wonder what He would think of the way His birthday is celebrated now.

Christmas celebrates, the birth of a baby, not all the hype, copious presents and food!! This little baby and his 33years of life, ministry, teaching and healing on this earth had, and continues to have, a profound effect on many people across the world and his birth certainly deserves to be a cause of great celebration.

Let us strive, this Christmas, to share the peace that Christ came into the world to give us, peace in the world, in our country, our communities and our families. There will be so many families who will not be able to come together this Christmas, there will be those with no family to share with and also families who will spend their first Christmas for many years at home together. So many different circumstances and so many feeling 'hard done by' for not being able to visit family, but let's remember that there are always those worse off than we are and be thankful for the simple joys we have.

It is also the season for Carol and Christingle services. There are Carol services in all our churches together with crib and Nativity services! I do hope that you will be able to join us for our celebrations – all are most welcome.

Throughout November we experienced some very wet and very windy weather which has been challenging for many around the whole country and I do wonder what December and January might bring. If you listen to some weather forecasters, they will tell you that snow and extremely cold weather is on the way! If that happens, please do, as always, remember to look out for others less fortunate, those who are unable to get out and fend for themselves.

When I next write it will be for the February edition, I don't know about you, but I do wonder just exactly 'where does the time go'!!!!

In the meantime, may I take this opportunity to wish you all a wonderful, peaceful and blessed Christmas and a very Happy New Year too.

With every blessing,

**Annie**

## Rector's Reflections

I wonder what makes a perfect Christmas for you? Family around, everything prepared, beautiful decorations, delicious food, well-chosen presents, family harmony, a lovely service in church of course (if not six).

For a proportion of households, I daresay all those things might happen. But for many the reality is very different. People who are on their own, or far from home. People for whom Christmas reminds them of a loved one who has died, or of a relationship turned sour. People dreading the credit card bill coming in a few of weeks.

At the time of writing Gaza is in flames, Israelis and Palestinians are howling with rage, the war in Ukraine rumbles on, along with 30 other current conflicts around the world. 117 million people are refugees. Many Christians among them, of course, for whom this is likely to be a grim Christmas.

In the context of all that suffering a challenging little sentence has been doing the rounds on the internet: If only we had a seasonally appropriate story about middle eastern people seeking refuge being turned away at their time of greatest need...

It's a timely reminder that Jesus himself was born and spent his early life in the most precarious of circumstances. That young family was homeless, far from those they knew, and even running for their lives from those determined to hunt them down and kill their precious new baby. Refugees in a foreign land.

I love all the traditional Christmas stuff, but I'm full of admiration for those who willingly give up on Christmas Day perfection in order to put themselves out for people for whom otherwise Christmas day would be hard, like the people who'll be cooking Christmas lunch for people otherwise on their own.

Perfection in anything is a tricky thing to strive for, and in Christian terms, it's usually not very helpful. As we celebrate the birth of the Prince of Peace, the Saviour of the lost, and whether we do it for people far away or close to home, how much better to explore imaginative ways of caring for the people closest to Jesus' own heart.

May God bless you with peace and hope as we prepare to welcome the Christ-child once more.

With my prayers and very best wishes,

**Caspar Bush** (Team Rector)

---

## TOWN HALL MOVIOLA

We shall not be showing a film in December but will be back on 18th January 2024

**Viv**

---

## Poppy Appeal 2023

Many thanks to everyone who contributed to this year's Poppy Appeal. The total for the village, including the Shop, the School and the Pub was £400.67p. I would especially like to thank my collectors who gave up their time to do the collection. The collection taken at the Remembrance Service for the Legion amounted to £115.25p.

**Cathy Liddle**

**Poppy Appeal Organiser**

---



## The Sky at night

The crisp winter air and longer nights provide the perfect backdrop for a breathtaking display of stars, planets, and meteor showers.

### 1. The Geminids Meteor Shower (December 13-14):

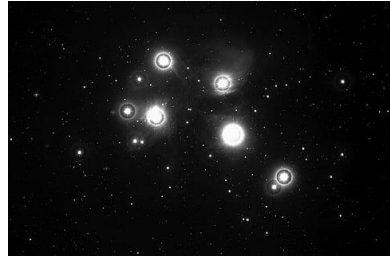
One of the most anticipated meteor showers of the year, the Geminids, will peak during the night of December 13th and continue into the early hours of December 14th. With little interference from the Moon, this shower promises a spectacular show, with up to 120 meteors per hour streaking across the sky.

### 2. The Winter Triangle:

Throughout December, the Winter Triangle, formed by three bright stars, will dominate the night sky. Consisting of three prominent constellations—Orion, Taurus, and Auriga—the Winter Triangle offers a wealth of celestial delights. Orion, the mighty hunter, will be easily recognizable with its distinctive belt of three stars. Look for the red-hued star Betelgeuse and the blue-white star Rigel, both shining brightly within Orion's constellation.

### 3. The Pleiades (Seven Sisters):

Located within the constellation of Taurus, the Pleiades, also known as the Seven Sisters, will be a prominent feature in the December night sky. This open star cluster, consisting of several hundred stars, is visible to the naked eye and has captivated observers for centuries.



### 4. The Planets:

December 2023 will offer several opportunities to observe the planets in our solar system. Look towards the southwestern horizon after sunset to catch a glimpse of Venus, the dazzling "Evening Star." Saturn, with its iconic rings, will be visible in the early evening sky, while Jupiter will rise later in the night, shining brightly in the eastern sky. With a telescope, you may even be able to spot the Galilean moons orbiting Jupiter.

Happy star gazing!

**Ed**



---

## Knitting, stitching & craft group.

A group meets weekly, on Fridays 2-4 pm in Christ Church Derry Hill. Bring your crochet, knitting or needlework, all abilities welcome. Share tips, chat and enjoy a tea or coffee, £3. Any queries contact Christine 817780, Liz 812138 or Marcia 820196



---

## FLOODLIGHTING THE SPIRE

This is a lovely thing to do to remember loved ones and to celebrate special anniversaries and birthdays. The Spire is currently lit between 7pm and midnight, though this varies with the time of year. Floodlighting the Spire can be arranged through **Richard Ayles – [inspireeditor@outlook.com](mailto:inspireeditor@outlook.com) 01249 814632**

A donation to the church for the cost of the lighting is welcome.

## Calne Without Parish Council

### **What we've been doing in the last month**

There continues to be lots going on here at Calne Without Parish Council. We continue to ensure that we represent the local residents and respond to planning applications. We have also provided a comprehensive response to Wiltshire Council consultation on their draft Local Plan. Whilst we felt there was some good policies included in the new plan there was a lot that we felt required an official comment. We have published our response on our website for information.

During the last month we have completed more improvement works to the local rights of way. Ensuring that the rights of way are accessible is a priority issue for us and we welcome any issues you have spotted on your local walks. If you regularly walk the public footpaths located in Calne Without and have noted any issues that we might be able to assist with, please get in touch and we can see if we are able to help.

We have also been setting our budget for the next financial year. We have worked hard to maintain our precept request at the same level as the last couple of financial years. We feel that this is important in the current financial crisis.

As the weather is getting colder, we are getting closer to being able to start loaning out our thermal imaging cameras for use in your homes. These cameras help residents identify areas in their houses where heat may be escaping allowing them to make informed decisions about thermal improvements in the property. Once the average temperature falls below 10°C we will be ready to start loaning out the cameras again. Please get in touch if you wish to put your name on the waiting list to have the loan of one of the cameras.

### **Reporting issues**

We regularly receive reports of work required that we pass onto Wiltshire Council for their attention. Did you know that there is a quick and easy way to report items such as potholes and issues with street lighting straight to Wiltshire Council? Search 'my wilts' app and follow the instructions. Once you have set up an account reporting is quick and simple.



## **Next Meeting Dates**

Full Council – Monday 11<sup>th</sup> December 2023, 7.30pm

Monday 12<sup>th</sup> February 2024 7.30pm,

All council meetings are held at the Lansdowne Hall, Derry Hill.

## **Keeping in Touch**

We have many ways that you can keep up to date with the work here at the Parish Council. Our website ([www.calnewwithout-pc.gov.uk](http://www.calnewwithout-pc.gov.uk)) is kept up to date with meeting dates and associated papers, we use our Facebook page (search Calne Without) for quick updates and news about our work and you can always get in touch directly with the clerk with any questions you may have.

We would like to take this opportunity to wish you all a Merry Christmas and a Happy New Year.

If you need to get in touch with the Parish Council, please contact the Parish Clerk [clerk@calnewwithout-pc.gov.uk](mailto:clerk@calnewwithout-pc.gov.uk)  
07751802761

## ***Katherine Checchia***

Parish Clerk

[www.calnewwithout-pc.gov.uk](http://www.calnewwithout-pc.gov.uk)

---

## **Mobile library visits to Derry Hill**

### **Lansdowne Hall Derry Hill**

14.30 – 15.45

Tuesdays: 12<sup>th</sup> & 26<sup>th</sup> December 2023

Tuesdays: 9<sup>th</sup> & 23<sup>rd</sup> January 2024

### **Kingston House Derry Hill**

10.10 – 10.30

Monday: 18<sup>th</sup> December 2023

Monday: 15<sup>th</sup> January 2024



## Wiltshire Local Plan Consultation

Although the closing date for objecting and commenting on Wiltshire Council's plans for new housing and employment ended in late November, a number of residents have asked that the Parish Council's objections and comments particularly concerning the housing allocation for Derry Hill and Studley be shared more widely.

Wiltshire Council's Draft Local Plan is the planning 'blueprint' for how our communities develop up to the year 2038, it specifies locations for large strategic housing and employment developments, predominately in and around towns. It also specifies the number of new houses that need to be built in communities across the county based on the total number of houses needed in Wiltshire.

Through its Local Plan, Wiltshire Council also allocate the number of houses to be built in each of the 60 or so 'Large Villages' it has designated but does not usually specify exactly where the houses should be built. Large Villages are settlements with local facilities such as a school, village hall, local shop etc and are seen as some of the more sustainable places for new housing. Some years ago, Wiltshire designated the combined Derry Hill & Studley as a Large Village. This is quite unusual as there are only 3 other such twin villages designated by Wiltshire amongst its 68 Large Villages, none of which are comparable with Derry Hill & Studley.

The Parish Council has objected to Wiltshire's allocation of 30 new houses in Derry Hill and Studley. The allocation has increased by 25% since the earlier draft in 2021 whilst at the same time the allocation for Wiltshire as a whole has reduced by about 35%. and the allocation for Chippenham Housing Management Area (of which Derry Hill & Studley is part) has halved. How could that have happened?

The previous draft of the local plan in 2021 took account of the 56 houses already built at Studley Gardens and K4 Kitchens on the A4. Wiltshire have now moved the end date of the plan period forward by 2 years from 2036 to 2038 but at the same time moved the base date of the plan forward by 4 years from 2016 to 2020. By doing that they are no longer accepting that the 53 houses in Studley Gardens count against the new allocation as the houses were occupied before 2020. Whilst a Local plan should clearly look forward in time it must also look back to understand what development has taken place and which areas have exceeded previous allocations. The arbitrary choice of

2020 as the base year has unreasonably distorted the allocation by taking no account of significant recent housing completions in Studley. This would have more than met the need for housing in our village and would probably not require any new housing for the next 15 years.

The Parish Council have also objected on the grounds that the Draft Local Plan has failed to consider all the constraints on development in the village. A reduction of 50% has been applied to the initial allocation of 66 houses as the village is constrained by Ancient Woodland, Historic Estates, priority habitats etc. However, Wiltshire Council has not considered the major highway issues affecting Derry Hill & Studley that constrain development, even though their assessment methodology lists 'Other Constraints' such as "physical infrastructure such as roads".

As we know the villages of Derry Hill and Studley are divided by the A4 a major road with high volumes of fast-moving traffic and HGVs within the 50mph and 60mph speed limits throughout Studley. The A4 and the congestion at Studley Crossroads severs this supposed 'Large Village' and is a barrier to pedestrian and vehicle movement between the two villages and is a major constraint on development. Almost all the considerable development over the last 40 years has been on the Derry Hill side of the A4 which has left the Derry Hill arm of the crossroads heavily congested at peak hours. Transport consultants employed by the developer of Studley Gardens confirmed that traffic flows on this arm of the junction were 20% above its capacity with delays of up to 8 minutes likely during the morning rush hour.

There is now no prospect of increasing the capacity of the junction as housing development has tightly constrained the crossroads. Traffic on the A4 will inevitably rise significantly with the additional traffic movements generated by the 2525 new houses allocated to the south Chippenham site as well as the proposed link road between the A350 at Lackham to the A4 at Pewsham, which is only 3 Kms from Studley Crossroads.

Any further development, even in Studley, will further exacerbate the congestion and delays and should be considered by Wiltshire Council as an important constraint on development. It is irresponsible of Wiltshire Council to allocate this level of housing to an artificially designated "Large Village" centred on such a congested and

dangerous crossroads on a major road with such high volumes of traffic.

Full details of the Parish Council's objections and its comments on policies and housing allocations for neighbouring Calne and Chippenham can be found on this link. <https://calnewwithout-pc.gov.uk/wp-content/uploads/2023/11/CWPC-Wiltshire-Local-Plan-Review-Response.pdf>

Although the consultation period has now closed it may well be worth residents contacting Cllr Ashley O'Neill our Wiltshire Councillor [ashley.oneill@wiltshire.gov.uk](mailto:ashley.oneill@wiltshire.gov.uk) to seek his support for the Parish Council's objections and comments.

These are my own personal views. If you would like any further information or would like to let me know your own views, please contact me on 01249 819428 or [i0anrees@icloud.com](mailto:i0anrees@icloud.com)

***Ioan Rees***

---

## **The Church stall at the Christmas Fayre**

A great time was had by all at the Garden Club Christmas Fayre, well done to Peter Prater and his team.

Congratulations to all the winners from the Church stall, they were:

Where is Rudolf - Debbie Sims

Name the reindeer Jimbo – Richard Aylen

Magnum of Champagne donated by Lord Lansdowne – Sue Light

Meal for Two donated by the Lansdowne Arms – Dianne Saxty



***Ed***

# Wiltshire's Local Plan Review Update: What it means for you and the Calne Community Neighbourhood Plan



Consultation for the Wiltshire Local Plan runs until the 22<sup>nd</sup> of November 2023.

The Wiltshire Local Plan covers a wide range of issues when thinking about development up to 2038, including:

- Housing, Employment and Infrastructure growth
- Protection of the Natural and Built Environment
- Response to Climate Change

Once adopted, all planning applications will be determined against the plan, making it the most important place-shaping document for Wiltshire.

## ***What does it mean for the Calne Community Neighbourhood Plan?***

Revisions to the Calne Community Neighbourhood Plan mean that it will also be looking ahead to 2038 to shape and inform development and conservation.

The policies we set must be in line with the Wiltshire Local Plan, so it is important that you look to see how it will affect you and let Wiltshire Council know what you think.

---

## **Volunteering for the Calne Link Scheme**

Do you have a few hours to spare each week to drive people to medical / non-medical appointments?

The Calne Link Scheme is urgently looking for more volunteer drivers to transport those in need from the SN11 postcode area.

Use own vehicle, mileage is reimbursed.

If you think you can help, please contact the Calne Link Co-ordinator on 07715 587604.

## The Golden Gates...

In 1792 (before the Golden Gates were built) Archibald Robertson describes his departure from Bowood Park using what is now the road from the Bowood Hotel to the Golden Gates. Robertson describes the scene - "The Road to Bath goes out from Bowood Park at Derry Hill, where it is intended to erect a gateway, or some other large building, which the situation calls for, it being a knoll commanding a most extensive prospect, bounded by the Gloucestershire hills on the right and the Somersetshire on the left". In Robertson's time instead of Golden Gates there would have been a small lodge house, some gates and the Shelburne Arms (perhaps thatched).

The Shelburne Arms (which became the Lansdowne Arms) stood right on the junction of Church Road and the Devizes Road - just to the front of where the Golden Gates are today.



In 1841, the Great Western Railway reached out from London Paddington to Chippenham, offering a fast and reliable route to the capital. Lord Lansdowne, commissioned Sir Charles Barry (photo of Sir Barry in c1840), architect of the Houses of Parliament, to build a new lodge on the western perimeter of the park at the point closest to Chippenham station. The result was the Golden Gates which have stood sentinel over the many changes to Derry Hill and Studley. The new Lansdowne Arms was built on its current site opposite the gates in 1843. Did Charles Barry give his name to Barry Place?

**Steve Calder**



**We are currently recruiting 4 Church Foundation Governors to join our Governing Body.**

The inclusion of foundation governors on the governing bodies of Voluntary Aided Church schools is one of the distinguishing characteristics of church school education. Our Christian Values are at the centre of everything we do at Derry Hill Primary School and we believe these Christian values empower our pupils to develop their spirituality and guide them in personal development as effective learners and good citizens.

**At this time, we are looking to fill our foundation governor vacancies from individuals who are not related to any children within our school.** Foundation governors can belong to a broad tapestry of Christian groups who are member Churches of 'Churches Together in Britain and Ireland' (CTBI) <https://ctbi.org.uk/member-churches/>

The role of a School Governing Body is:

- Ensuring clarity of vision, ethos and strategic direction.
- Holding senior leaders to account for the educational performance of the organisation, its pupils, and the performance management of staff.
- Overseeing the financial performance of the organisation and making sure its money is well spent.

Foundation governors have additional responsibility as representatives of the church's role in the school, and must fully support, cherish, preserve and develop the distinctive Anglican and Christian ethos of the school. Ensuring also that the school has a distinctive Anglican and Christian vision and values which lead to effective practice and outcomes whilst striving to preserve and strengthen the links between church, school and Diocese.

Governors need a strong commitment to the role and to improving outcomes for children, the inquisitiveness to question and analyse, and the willingness to learn. You will work alongside the other

categories of governors and the Senior Leadership Team to support governance across the school.

If you join our governing body, you will serve for a four-year term. Being a governor does take up time. There are five full governing body meetings each year, these are currently held at 6pm on Thursday evenings in school. As part of the Governing Body you will need to set aside time to prepare for these meetings, school monitoring activities and undertaking training/updates. We offer new governors a supportive induction and a mentor. Full training for the role is also provided via the Local Authority and Salisbury Diocese.

We warmly invite anyone interested in finding out more about the role to contact the school to arrange an informal chat.

Tel: 01249 812139. Email: [clerk@derryhill.wilts.sch.uk](mailto:clerk@derryhill.wilts.sch.uk)

---

## **Mothers' Union Prayer & Fellowship Group**



We had our last meeting of the year in Christ Church on Wed 1<sup>st</sup> November with an excellent talk about All Saints and All Souls by Rev'd Katey Minshall from Royal Wootton Bassett. It was an excellent talk and very appropriate for 1<sup>st</sup> November which everyone enjoyed. It was also nice to welcome a long-standing MU member from Calne who now lives at Kingston House, so she was brought to the meeting by her carer; it was a delight to meet them both and we look forward to seeing them again in Church at our February meeting.

In December we are going for a meal to celebrate Christmas and in January we are meeting at Nan's home in Calne, however, we are back in Church between 5 – 7<sup>th</sup> February for the MU Wave of Prayer. Salisbury Diocese have not yet given us the exact date or time but if you would like to join us the details will be in the February Inspire. It would be lovely to see new faces, so everyone is very welcome.

All that remains is for me, on behalf of all our members, to wish everyone a very Peaceful and Joyous Christmas and a Very Happy New Year.

***Barbara Parry***



# The Derry Hill & Studley Christmas Lights Switch On

**4:40pm on Saturday 2<sup>nd</sup> December**



Join us at this new community event from **4:40pm on Saturday 2<sup>nd</sup> December** in the Car Park of the Lansdowne Hall. Your Community Committee invites you to get the exterior of your own homes ready for Christmas illumination. At the same second our VIPs switch on the lights on our very own village Christmas Tree, courtesy of the Bowood Estate, at exactly 5pm on the 2<sup>nd</sup>, we invite you to switch yours on. We will count you down and hope that you can find inventive ways to flick your own switches. Alongside our VIP switch on there will be carolling with the Corsham Town Brass Band, a traditional Xmas Market, food and drink, a small number of gift stalls and, of special note, the opportunity to buy your own real Christmas Tree and other traditional greenery and carry it home with you through a newly lit Derry Hill & Studley. You can't get much more Dickensian than that!

There may be one or two other surprises that might excite and delight you and your children – well, the younger ones anyway!

***Peter Prater***

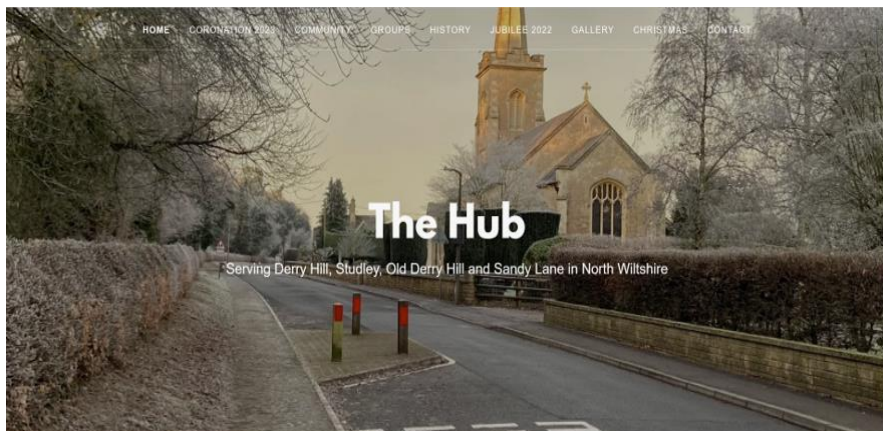
Derry Hill & Studley Community Committee

Tel: 07977 256756

Email: [peterprater@btinternet.com](mailto:peterprater@btinternet.com)

# The Hub - serving Derry Hill, Studley, Old Derry Hill and Sandy Lane in North Wiltshire

[www.derryhillandstudley.org](http://www.derryhillandstudley.org)



## What's on



## It's panto time again!

I am very excited to announce we will be performing **'The Wizard of Oz'** this January 2024!

This is our 10<sup>th</sup> year anniversary, so we are really looking forward to you joining us in celebrating this milestone for the group and see if we do find the Wizard in his emerald castle!

The shows are on the following dates:

**Friday 26<sup>th</sup> January 7pm**

**Saturday 27<sup>th</sup> January 2pm**

**Saturday 27<sup>th</sup> January 7pm**

We are still very interested to hear from anyone who would like to help backstage or front of house.

If anyone would like to book tickets, they will be on sale very shortly so please look out for the posters.

**Jane**



JOIN US FOR 3 HOURS OF CREATIVE FUN AND NEW FRIENDSHIPS



YOUR NEW COURSE

# ART CLASS

FOR ABSOLUTE BEGINNERS TO IMPROVERS - JUST LIKE YOU!



## LEARN TO PAINT AND DRAW PEOPLE AND PLACES

Over the **14 week** course you will explore at least four different mediums: **Pencil** or other sketching media, **Pastels**, **Watercolour**, **Acrylics**. Discover how to paint faces, figures, beautiful landscapes, animals, still life and much more! Learn artists' secrets needed to create beautiful pieces of original art.

## HAVE FUN AND MAKE NEW FRIENDS

Even if you have never picked up a brush before, we will guide you through to make it easy and fun! On completion of the course you will have 12 pieces of original art to cherish forever. This is an extremely enjoyable way to develop your creative side, and really enjoy the next few months.

## STRICTLY LIMITED PLACES

Our classes are popular, and places are strictly limited to maintain high standards of tuition so hurry... don't miss out!

**PLACES LIMITED. PLEASE CALL NOW FOR MORE DETAILS AND A FRIENDLY CHAT.**

NEW CLASS STARTS SOON



YOU DESERVE THIS TREAT



Lansdowne Hall  
in Derry Hill, Calne

01249 736 494



# **A Derry Hill and Studley Christmas**

16:40 to 19:00  
2nd December

Lansdowne Hall  
Petty Lane



Village Christmas tree,  
lights switch on,  
carol singing, brass band, gifts  
German street food and Gluwein



# The Wizard of Oz

*We're off to see the Panto!*

## Performances

Friday 26th January 7.00pm

Saturday 27th January 2.00pm & 7.00pm

Lansdowne Hall, Derry Hill

## Box Office

Tel 07733231735

Adult £7 | Child £3.50 | Family £18

Doors open 30 minutes prior to each performance

 [facebook.com/DerryHillTheatre](https://www.facebook.com/DerryHillTheatre)



SCAN ME

## Gardening Club

At the November meeting, our last of the year, members listened to a talk by Galanthophile Lyn Miles – *For the Love of Snowdrops*. We learnt that Snowdrop buying is a serious matter often involving much expense! Serious snowdrop lovers will pay anything from a few pounds to several hundred pounds for one bulb. In 2022 a single new snowdrop bulb was sold on eBay for £1,850!



Lyn opens her garden at Boscombe Village nr Salisbury as part of the NGS scheme on Thursdays between 4<sup>th</sup> January and 7<sup>th</sup> March [www.westcroftgarden.co.uk/garden](http://www.westcroftgarden.co.uk/garden) for further details.

Following the refreshment break with delicious cakes made by Chris, Ali & Alison, our Chair, Peter, gave a presentation looking back at 2023 and forwards to 2024.

Meetings are held on the first Tuesday of the month February to November 7.30pm at Christ Church, Derry Hill.

### 2024 Programme

Date	Speaker	Subject
6/2/24	TIMOTHY WALKER	SPRING IN THE GARDEN
5/3/24	MARCEL FLOYD/CAPABILITY CHARLOTTE/M BAKER	GARDENERS' QUESTION TIME
2/4/24	KATE COLLYNS (GROWN GREEN)	SALAD GROWING ALL YEAR ROUND
7/5/24	CARRIE PACKENHAM	CULTIVATION AND USES OF UNUSUAL HERBS
4/6/24	GARDEN VISIT - TBC	
2/7/24	SALLY MORGAN	CLIMATE CHANGE GARDEN
6/8/24	ALDETHA RAYMOND	PLANT PROPAGATION
3/9/24	MATT SIMPSON	HYDROPONICS
1/10/24	CHARLOTTE HITCHMOUGH	RAIN GARDENS
5/11/24	HARRIET RYCROFT	POTTY TIME (A YEAR IN POTS)

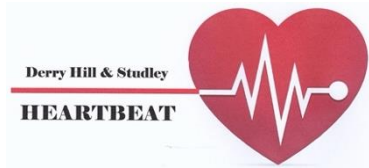
For further details on how to become a member of the club please contact me [pdoel@live.co.uk](mailto:pdoel@live.co.uk) or 0783 3755232. **Paula**

# Cardiac Arrest – 999 & CPR ASAP !

If you see a person in cardiac arrest, call 999 immediately and start CPR. You will be told what to do by the 999 operator while

you wait for an ambulance or paramedic to arrive. Time is critical and CPR is necessary to maintain an oxygen supply to the brain and other organs until the heart can be restarted by defibrillation shock.

You don't need to be qualified to do CPR or to use a defib, you are trying to save a life!



## How to do CPR on an adult in 5 steps

1. Check for a response. Firmly shake the person's shoulders and ask loudly if they're okay.
2. Call 999. If the person is unconscious and not breathing, or not breathing normally, start CPR.
3. If there is someone with you 999 will tell them how to get the nearest defib – there are 6 in the village!
4. Start chest compressions. With the heel of your hand in the centre of their chest, press down firmly at a rate of 2 per second. Try pushing to the beat of Stayin' Alive by the Bee Gees.
5. Use a defibrillator as soon as you can. Our defibs tell you what to do while you continue CPR.

Heartbeat will be running another awareness/training course in the New Year. In the meantime, have a great Christmas and stay safe.

**Julian** Derry Hill and Studley Heartbeat  
07769 970401 / [julesoliver3@gmail.com](mailto:julesoliver3@gmail.com)

## Derry Hill C of E (VA) Primary School

December is always a very busy month in school with many events and activities being held within a brief period, but first an update on some happenings of the last month. Two teams were entered into the Chippenham Schools' Football event at Stanley Park with both doing very well. One of the teams made it to the County Finals to be held in January. We have also been taking part in lots of different activities for Anti-bullying week including wearing odd socks to celebrate all of our differences.

There are a host of Christmas events to mark in the coming weeks including the school Christmas Bonanza on the 1<sup>st</sup> December. There will be lots of stalls on offer for the festive season, so why not come along and join us from 5pm onwards!

December will see key stage one Nativity plays and a key stage two Carol Service in church on the last day of term. Mid-month sees Key Stage One and Key Stage Two Christmas parties and the Christmas Lunch, while the whole school is looking forward to a trip to the Pantomime on 7th December to see 'Snow White'.

Everyone at the school wishes you a very happy and enjoyable Christmas and New Year!

***Mrs Hayley Roberts Head Teacher***

---

### PILATES

Suitable for ALL ages and abilities  
Improve Flexibility, Strength and Muscle Tone

**Lansdowne Hall Derry Hill Wednesday**  
12-1pm

**Lansdowne Hall Derry Hill Wednesday**  
5.30-6.30pm

**Beversbrook Calne Mondays 6-7pm**

6 WEEK COURSE £60.

Contact: Dena 07736 839000. [www.dbpilates.co.uk](http://www.dbpilates.co.uk)

Email: [denabray10@gmail.com](mailto:denabray10@gmail.com)





## Book Club Review

### The island of missing trees by Elif Shafak

This book is an imaginative, multi-layered story with a dual time narrative reflecting the history of the volatile time in Cyprus in the 1970s and the repercussions this has on a young teenage girl living in present day London.

It involves magical realism with narration from a fig tree, that observes the comings and goings of a teenage couple that meet secretly due to one being Greek Cypriot and the other Turkish Cypriot.

The fig tree goes on to witness the devastation of war and the disappearances of many people from both communities.

It is a book about overcoming past trauma, trauma passed on from generation to generation and not letting it define your life.

It is a call to the reader to try to put aside our differences and respect the view of the person on the other side.


Shafak writes of pain and heartbreak through the prism of hope and renewal. She writes of the need to tell the stories of the past rather than bury them.

It is a very moving book which describes the atrocities and injustices in Cyprus in the 70s but also has a resonance with the same issues still happening around the world today.

We all agreed it was a beautifully written book and it provoked much discussion about a wide variety of issues. I would highly recommend it.



**Kay**



Christ Church Derry Hill  
Christmas Concert  
by MASK

Monday 11<sup>th</sup> December 2023  
At 7.30pm

An evening of  
Christmas songs  
and Carols

Refreshments and raffle

Donations to Christ Church.

All welcome

## Calne Neighbourhood Policing Team

### Crime and incident updates

- 13/09/2023 at 14:00hrs, unknown persons gained access to a small field in Sandy Lane and removed various metal items. Crime report: 54230099618 refers.
- On 24/09/2023 at 16:45hrs, a blue Vauxhall Corsa was seized by police on the A342 where the driver was reported for not having a valid insurance policy.
- On 04/10/2023 at 16:44hrs, a white Isuzu D-max was stopped on the A361 where the driver was reported for excessive speed, 73mph in a 50mph limit whilst towing a trailer.
- On 09/10/2023 17:12hrs, as part of Op. Snap a driver of a white Iveco Daily van was reported after dash camera footage was received of the driver seen to be using a mobile phone whilst driving.
- Between 03/11/2023 21:30hrs and 04/11/2023 07:30hrs, Unknown suspects have smashed rear windscreen, rear passenger and driver's windows and front passenger windows of a red Audi A5 causing £3,500 worth of damage in Turf House Lane, Bremhill.
- On 14/11/2023 at 14:05hrs, a silver Vauxhall Corsa was stopped in Derry Hill. The driver was drug wiped which tested positive. The driver was arrested on suspicion of driving over the prescribed drugs or alcohol limit and conveyed to Swindon Custody. The driver was later released under investigation. Enquiries are ongoing.

### Local News

**Man jailed for causing serious injury by dangerous driving!**

A man has been jailed after causing a three-vehicle collision when overtaking on a country road in Wiltshire, putting two families in hospital.

Samuel Jeffrey, 22, of Lansdowne Crescent, Derry Hill, Calne was sentenced at Salisbury Crown Court yesterday, to 28 months in prison following the collision on the A4 between Calne and Chippenham.

At around 7.30pm on January 15 last year, Jeffrey was driving his dad's car when he overtook another vehicle on a bend and crashed into an oncoming car, carrying a family of three. That vehicle then spun and hit another travelling towards them, in which six people were inside.

## Vehicle crime in Calne.

During October, we received several reports of items being taken from vehicles in Calne.

Enquiries are ongoing, but it's believed that unknown person/s have walked around housing estates trying vehicle door handles. These have included vehicles which have been parked both on and off driveways at the time. Please ensure your vehicle is locked and all valuable items have been removed.



## Social Media and Community Messaging

Regular updates for the Calne area can also be found on community messaging and Facebook page: Calne police



*Season's Greetings from all in the Calne Police Force.*

**Mark Cook** PCSO

# ALFORD TREE SERVICES



**All aspects of tree work**  
**Hedge Cutting**  
**Fully Insured**

NPTC City and Guilds certified  
Lantra awards certified

**07465 434302**

alfordtreeservices@gmail.com

## Rub a Dub Pre-School

Firstly, Merry Christmas and a very Happy New Year from your local village Preschool; Rub a Dub.



Rub a Dub Preschool offers Early Years provision to children from age 2 and is open 08:30-17:30, Monday to Friday in term time. We also offer an after-school-club to all children of Derry Hill Primary School. Spaces are available. Please contact [rubadubpreschoolenquiries@gmail.com](mailto:rubadubpreschoolenquiries@gmail.com) for more information.

We want to welcome one of our lovely team members back from maternity leave. Welcome back Lucy!

At this time of year, Christmas shopping online via [easyfundraising.org.uk](http://easyfundraising.org.uk) can generate valuable extra funding for our Preschool and it's easy to do. Nominate Rub-a-Dub as your chosen charity and companies will donate to us without costing you a penny!

The Christmas raffle tickets are on sale now. £1 a ticket for the chance to win some fantastic prizes from the following sponsors:

- Rugby Tots
- Bowood House & Gardens
- Gurkha Banyan
- The Pewsham
- Quince Tree studio
- Life is What you Bake it
- Allington Farm Shop
- Visualise Fitness
- LPB Fitness
- LK Beauty
- My Skills For Life
- John Williams Heating
- The Farmyard Bakery
- Waitrose

A huge thank you to all those who have donated to our Christmas raffle so far. If you'd like to donate a bottle of something for our top prize; a wheelbarrow of drinks, then please contact me on [Rubadubsecretary@gmail.com](mailto:Rubadubsecretary@gmail.com).

As we bring this year to a close, watch this space for next year when we hope to bring back a village favourite, the barn dance.

Thanks again for all your help and support this year.

Season's Greetings from all at Rub a Dubs.

**Rachel Missen** Rub-a-Dub Secretary

## Derry Hill & District WI

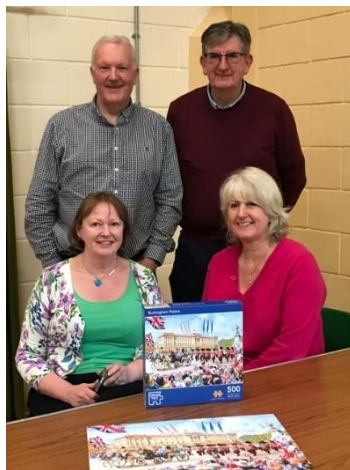
Some of our members went for their last walk this year at Bowood. They enjoyed the late Autumn colours of the trees and appear to have



raided the shop!

We had a wonderful afternoon at the 'Puzzle Challenge' WI fund raiser organised by Margaret Bell and her team. Twelve teams of four puzzlers attempted to complete identical 500-piece

puzzles in 2 hours. We had a refreshment break at half time. Filled ourselves with delicious cake and tea or coffee, then back to complete our task. One team finished in 1hr 20 mins closely followed by 3 others. Some of us, sadly, didn't complete our puzzles in the allotted time but still had a brilliant time. Congratulations to the winning team Christine, Mark, Helen and Paul. A big 'Thank You' to Margaret and her super team. Can we do it again please?





Sally hosted a Knit and Natter in her home on Monday 6<sup>th</sup> November. People were very industrious knitting and finishing gifts for our stall at the Community Christmas Light Turn On in December.

The WI ran a 'Cake Stall' at the Gardening Club Christmas Fayre and will be running a 'Hand Made Christmas Gift Stall' at the Community Light Switch On. So be sure to visit us there.

Derry Hill & District WI would like to wish you all a very Merry Christmas and a Happy New Year!

We meet on the 4<sup>th</sup> Wednesday of the month at the Lansdowne Hall, 7.30pm. Why not come along and give it a try.

**Tina**

---

## **CO-ORDINATOR URGENTLY REQUIRED**

The Calne & District Community Link Scheme urgently requires a volunteer to assist our existing team of Co-ordinators.

This role, which can be carried out from home using the Link Scheme mobile phone, provides the vital connection between our volunteers and those in the community who rely on the transport and caring services we provide. Computer literacy is required.



Being part of the team, you can be assured that the existing Co-ordinators will give you all the support required, and all the costs involved are financed by the scheme.

For further information phone 07715 587604

Email: [calnelink@outlook.com](mailto:calnelink@outlook.com) Web: [Calnelinkscheme.org.uk](http://Calnelinkscheme.org.uk)

## Mothers' Union Prayer & Fellowship Group

We had our last meeting of the year in Christ Church on Wed 1<sup>st</sup> November with an excellent talk about All Saints and All Souls by Rev'd Katey Minshall from Royal Wootton Bassett. It was an excellent talk and very appropriate for 1<sup>st</sup> November which everyone enjoyed. It was also nice to welcome a long-standing MU member from Calne who now lives at Kingston House, so she was brought to the meeting by her carer; it was a delight to meet them both and we look forward to seeing them again in Church at our February meeting.



In December we are going for a meal to celebrate Christmas and in January we are meeting at Nan's home in Calne, however, we are back in Church between 5 – 7<sup>th</sup> February for the MU Wave of Prayer. Salisbury Diocese have not yet given us the exact date or time but if you would like to join us the details will be in the February Inspire. It would be lovely to see new faces so everyone is very welcome.

All that remains is for me, on behalf of all our members, to wish everyone a very Peaceful and Joyous Christmas and a Very Happy New Year.

**Barbara Parry**

---

## WI Walking Netball

Walking Netball is really just a slightly tweaked version of the original game, played at a laid-back pace. The key thing is that you must walk, at all times, when you are playing. Sneaky jogging strictly prohibited. Walking Netball is for everyone and you will find it easy to pick up. The most important rule is having fun and a laugh. We are a very friendly group of ladies, so if you would like to come and have a go at Walking Netball it is £2 per session, Monday and Friday at 1.45-2.45 pm during school term, on the outside multi-pitch next to Lansdowne Hall.



An excellent way to socialise, have fun and keep fit.  
Happy Christmas everyone!

**Tina** (01249 814145)





# ST MARY'S CALNE SPORTS CLUB



- State of the art fitness suite
- 25 meter swimming pool
- Over 48 fitness classes per week
- County sized sports hall
- Climbing wall
- Four badminton courts
- Basketball court
- Indoor 5-a-side football
- Coffee area
- Indoor hockey pitch
- Volleyball court
- Table tennis
- Children's parties
- Running & Triathlon Club

The "Hidden Jewel" of Calne. You would be forgiven for thinking that St Mary's Calne Sports Club is not involved in its local community, but outside the classroom our doors are open to the public every day.

Set in the idyllic grounds of St Mary's Calne, the modern contemporary building houses a cutting edge gymnasium and swimming pool facilities as well as the recent Sports Complex development. We now have a County sized sports hall, multi-purpose room, larger dance studio, additional changing facilities and disabled access.

MORE INFO



t: 01249 857335

w: [www.smcsports.co.uk](http://www.smcsports.co.uk)

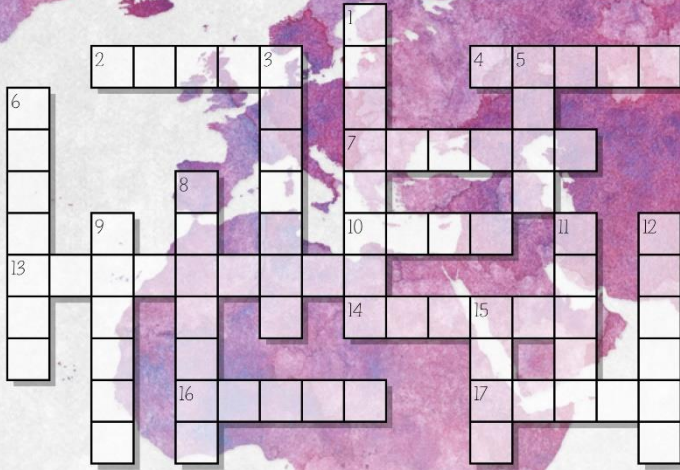
e: [sportsclub@stmaryscalne.org](mailto:sportsclub@stmaryscalne.org)

63 Curzon Street, Calne, Wiltshire, SN11 0DF

FOLLOW US



December 2023 / January  
2024 Crossword



ACROSS

- 2 Assistants(5)
- 4 Bird's claw(5)
- 7 Health Centre(6)
- 10 Compass point(4)
- 13 Flat(9)
- 14 Female sibling(6)
- 16 Assumed name(5)
- 17 Saying(5)

DOWN

- 1 Parentheses(8)
- 3 Adept(7)
- 5 Continent(4)
- 6 Sea inlet(7)
- 8 Skilled worker(7)
- 9 Woody grass(6)
- 11 Artery(5)
- 12 Dirty(6)
- 15 Hard wood(4)



Visit our website



# Sparkly Singers

*Making our own kind of music*



Join our mailing list

Sparkly Singers is a very different kind of choir experience. Founded with the simple aim of bringing the joy and benefits of group singing to everyone, regardless of age or ability, our emphasis is on singing in a way that is engaging, motivating and, most of all, fun.

Rather than splitting into parts or learning harmonies, we prefer instead to sing in unison, infusing our performances with our own rather unique mix of humour, movement and the occasional wacky prop.

**Weekly live rehearsals at the Lansdowne Hall in Derry Hill, every Thursday from 8:00pm.**



**Join our mailing list to receive our weekly newsletter and book your FREE taster session.**

So if you simply love to sing, but have yet to find the choir that perfectly complements your sense of fun, why not think about giving us a try. Browse our website, check out our Facebook page, or find us on YouTube.




[www.sparklysingers.co.uk](http://www.sparklysingers.co.uk)



[hello@sparklysingers.co.uk](mailto:hello@sparklysingers.co.uk)



07831 154762

**Thursdays 10.30am to 12pm**  
at  
**Christ Church, Derry Hill**  
Drop in for a coffee, tea, biscuits  
Everyone welcome

Image: Frank Leuderalt on Unsplash

# Footcare in your home

Are your feet complaining of corns, thick toenails, calluses and hard skin? Give them a treat.



**Lynda Handyside**

MAFHP, MCFHP

 **07813 094 395**

 [lynda@handysides.co.uk](mailto:lynda@handysides.co.uk)

 [Footcareinyourhome](https://www.facebook.com/footcareinyourhome)

**NICK ARCHIBOLD**  
CABINETS & KITCHENS



*"The standard of workmanship is par excellence and our house is certainly enhanced" (Mr & Mrs C. Derry Hill)*



[www.nickarchibold.com](http://www.nickarchibold.com)  
Bespoke . New-fit . Modernise

No-obligation  
**TRIAL  
STAYS**



Kingston  
House  
—  
Care Home



Choosing a care home for you or a loved one can be ~~a daunting decision.~~  
*an empowering choice.*

Kingston House is a charming not-for-profit home in Calne offering award-winning residential, dementia and respite care.

- ✓ No deposit required
- ✓ 'Home for Life' financial assurance
- ✓ Leading not-for-profit care provider

Whether you're ready for care or just exploring your options, call us today to find out more about our approach and book your no-obligation visit.

Call **01249 471 516**

greensleeves  
care  
You're among friends



# Festive Dining at Bowood

Unforgettable dining experiences for all the family to enjoy during the festive season.

**Our delicious festive menus will be served from  
Monday 27th November**

For further information and to view our menus, visit [www.bowood.org](http://www.bowood.org) or scan the QR code.

To make a reservation, call **01249 822 228**



***State of the art sports and  
community facility in Calne.***

[www.calne.gov.uk/beversbrook](http://www.calne.gov.uk/beversbrook) | 01249 814191



- Fourteen football pitches
- Ten wicket cricket square, plus artificial cricket wicket
- Two all weather pitches, small sided court and full size 3G with professional standard floodlighting
- Archery range
- Bar
- Wedding packages
- Parties
- Fitness Classes
- Weekly Sports and Social Club
- Electronic vehicle charging points 



**EDWARD AND  
ALAN LIMITED**

**THE FLOORING AND TILE SPECIALIST**

**We supply and fit**

- All types of blinds
- Amtico flooring
- Carpets
- Ceramic wall and floor tiles
- Marmoleum flooring
- Vinyl flooring
- Wood flooring



We provide a fitting service and free quotations. We have staff to help you in choosing the right floor covering for your needs

52 The Causeway • Chippenham • Wiltshire • SN15 3DD

Tel: 01249 654559 Fax: 01249 443896

E-mail: [info@edwardandalan.com](mailto:info@edwardandalan.com)

## Wilkey Garden Machinery Services Limited

Established 2001

Stanley Bridge Farm, Chippenham, Wiltshire SN15 3RQ

*John Wilkey, a skilled engineer with more than 30 years experience, specialising in the service and repair of all leading makes and models of garden machinery.*

All enquiries welcome, call John on  
**07970 868824 / 01249 740358**

[john@wilkey.biz](mailto:john@wilkey.biz)

collection and delivery service

# GRAY & AMOR LTD.

**CARPENTRY & PROPERTY RENOVATION**

Covering all aspects of property renovation and maintenance.

View our range of services online or call to discuss your project.

**01380 587006 / 01672 596006**

**[info@grayandamor.co.uk](mailto:info@grayandamor.co.uk) [www.grayandamor.co.uk](http://www.grayandamor.co.uk)**





Radfield  
Home Care

Award winning,  
personalised care in  
your own home



Companionship



Medication support



Housework & laundry



Personal care



Meal preparation



Bespoke care plan



Live in care



Assistive technology

Call us for a chat about care

**01249 588 105**

[www.radfieldhomecare.co.uk](http://www.radfieldhomecare.co.uk)



Radfield Home Care  
Chippenham & North Wiltshire  
Suite A, First Floor,  
3-4 New Road,  
Chippenham,  
SN15 1EJ

HCA  
HOME CARE AWARDS  
**Outstanding**  
National  
Home Care Group  
2023

2018 - 2023  
**TOP 20**  
HOME CARE  
GROUP  
[homecare.co.uk](http://homecare.co.uk)

Regulated by  
 Care Quality  
Commission



# Early Bird Season Tickets



Early Bird Season Tickets for 2024 will be available to purchase between Friday 1st December and Wednesday 31st January, so don't miss out.

Give the gift of Bowood this Christmas, Season Ticket Gift Vouchers and Garden Tours available.

Tickets can be purchased online at **BOWOOD.ORG/TICKETS**



HOUSEANDGARDENS@BOWOOD.ORG  
BOWOOD HOUSE & GARDENS, WILTSHIRE, SN11 0LZ



## Moors Wood Farm Christmas Trees

**GROWN IN THE HEART OF BROMHAM!**

**SUSTAINABLE HOME GROWN CHRISTMAS TREES ON YOUR DOORSTEP!**

**NORDMAN FIR, HIGHLY NEEDLE RETENTIVE, NO MESS!**

Come and mark your tree in advance and put down a deposit ready for Christmas!

Call us on: 07809425670 and arrange collection or delivery!

Find us at 33 Dullett, Bromham, SN152HY

*Choose your own tree still in the ground!*

*Hand-made wreaths and decorations available to go with your tree!*





---

# THE DUMB POST INN

AWARD WINNING TRADITIONAL FREEHOUSE,  
FAMILY OWNED AND RUN, BREATHTAKING VIEWS  
AND LOCALLY SOURCED HOMEMADE FOOD

[WWW.THEDUMBPOST.CO.UK](http://WWW.THEDUMBPOST.CO.UK)  
01249 813192

---





THE PEWSHAM  
*Christmas  
Menu*



**28TH NOV - 24TH DEC 2023**

**BOOK YOUR CHRISTMAS MEAL WITH US  
28TH NOV - 24TH DEC 2023**

**CONTACT**

**HELLO@THEPEWSHAM.COM**

**01249 247836**

**WWW.THEPEWSHAM.COM**

# Bookings available!

# West Country Sweep

Due to expansion, local chimney sweep working in the area for 11 years now has availability

07551 469653



Member of the Guild of Master Sweepers  
[www.guildofmastersweepers.co.uk](http://www.guildofmastersweepers.co.uk)

Solid fuel, gas, oil & biomass flues  
Birds nests removed, Cows supplied and fitted  
Certificates issued for insurance purposes



Member of The Chimney Sweep Academy  
[Chimneysweepacademy.co.uk](http://Chimneysweepacademy.co.uk)

## The Derry Hill Florist .com

*Hand Picked Just For You*

**Weddings - Funerals - Birthdays - Gifts**

**Operating 7 days a week  
for the convenience of our clients.**

**07968 091217**

[newleaffloristry@hotmail.co.uk](mailto:newleaffloristry@hotmail.co.uk)



[facebook@thederryhillflorist](https://www.facebook.com/thederryhillflorist)



WhatsApp

## Wellbeing notes

### Lighting a candle for loved ones

On Christmas Eve I love to step out into the fresh air to drop off last minute gifts and cards. Last December, as I went from one household to the next, I enjoyed glimpsing different interiors, some brightly lit with festive lights, others quieter, but each one a home.

One hall contained a special candle, lit for loved ones who had passed on. It was a touching reminder that we all suffer loss. I

remember a white-haired neighbour in her cosy kitchen. My uncle who loved trains and working with wood. A friend who sent uplifting texts. And the gaps they've left behind will never quite be filled, because they were unique and wonderful beings.

That beautiful sister who sewed ballgowns by hand; the handsome boyfriend of a friend who seemed a keeper; the grandmother who took pleasure in sending hundreds of cards; the pet who went missing one too many times... these individuals were all loved and then they were mourned.

Since they left, new babies have been born. New friends have been made. New pets have been adopted. Life absolutely does go on. But remembering absent kith and kin is a golden part of the season. Because Christmas is above all about love. And, while we will always miss the ones who went before us, the love they left lives on.



**Suzanne Askham**



# G goughs solicitors

Your local trusted advisors since 1882

**TRUSTED LAWYERS.  
HERE FOR YOU.**

We have always used Goughs Solicitors. Divorce, wills, conveyancing and most recently for probate on my Father's estate. They are professional, helpful and guide you through all stages in these complicated matters.  
A R, Calna.



Our clients rate us as excellent

THE  
**LEGAL  
500**  
2021



- Residential & Commercial Property
- Divorce & Family
- Wills & Powers of Attorney
- Probate
- Future Planning
- Corporate & Employment Services
- Real Estate

**OUR EXPERIENCED LAWYERS ARE HIGHLY-KNOWLEDGEABLE AND PROVIDE A QUALITY,  
PERSONAL SERVICE FOR THEIR CLIENTS**

#### ISABEL FIGUEIREDO

Partner | Residential Property

isabelfigueiredo@goughs.co.uk



I am proud to provide an exceedingly high quality of personal service to my clients whether they are buying their new home or stepping onto the property ladder for the first time.

#### GEORGINA CATLIN

Associate Solicitor | Family

georginacatlin@goughs.co.uk



I specialise in divorce and separation matters, including complex financial matters. I also assist in negotiating and advocating arrangements for children within court proceedings.

#### ALEXINE MORAN

Associate Solicitor | Private Client

alexinemoran@goughs.co.uk



I have over 10 years' experience and specialise in wills, powers of attorney, estate administration, deputyships and general court of protection applications.

#### ALISON PARFITT

Trainee Paralegal | Residential Property

alisonparfitt@goughs.co.uk



I take the time to understand my clients needs so I can guide them seamlessly through their property sales and purchase

To speak with a member of our Calna Team, please head to our office at  
The Strand, Calna, SN11 0JU or call 01249 812086

# mander duffill

Est 1947

CHARTERED ACCOUNTANTS  
TAX & FINANCIAL ADVISERS

## WHAT WE OFFER:

- Accountancy and Tax Services
- Tax Compliance, Planning and Advice
- International Tax Planning and Advice
- Business Sales and Acquisitions
- Company Restructuring
- Company and Business Start-ups
- Management Accounts, Bookkeeping and VAT Services
- Payroll and Auto Enrolment
- Research and Development
- Financial Services
- Investments
- Protection
- Inheritance Tax Planning
- Pensions and Retirement Planning

## GET IN TOUCH:



info@manderduffill.com



01249 650441



The Old Post Office  
41-43 Market Place  
Chippenham SN15 3HR

Offices also in Devizes,  
Malmesbury and London



ICAEW  
CHARTERED  
ACCOUNTANTS

[www.manderduffill.com](http://www.manderduffill.com)



Registered Charity 1030979

Lansdowne Village Hall, Derry Hill.

Ofsted Registered Pre-school based in Derry Hill

Open 5 days a week term time only from 8.30am to 5.30pm. Welcoming children from age 2.

Forest Rangers on Wednesdays  
Rising Stars on Friday afternoons

Our dedicated and caring staff support and nurture each unique child in a lovely environment, offering a wide range of activities to develop skills & learning including Maths & Language development, creative play, singing and lots more!

Visit our website for more information:

[www.rubadubpreschool.com](http://www.rubadubpreschool.com)

Or call us on 07894 073865

Ofsted number: 199453

## Tony Parsons

### Domestic Appliance Repairs

Over 30 Years  
Experience  
Washing Machines  
Tumble Dryers  
Electric Cookers  
Dishwashers

Mobile 07970117023



## Derry Tots!

Join Us at Derry Hill Under 5's  
Playgroup

Lansdowne Hall in Derry Hill Village,  
halfway between Calne and Chippenham

Wednesdays, Term Time 9.30-11.30am  
From Ages 0-5

Price per Child: £2 p/w, Siblings £1 p/w

For More Details Please Email  
[enqdhub@gmail.com](mailto:enqdhub@gmail.com)







Thinking  
of selling?

Call today for a free valuation

01249 813813

or email

[res.calne@atwellmartin.co.uk](mailto:res.calne@atwellmartin.co.uk)



[www.atwellmartin.co.uk](http://www.atwellmartin.co.uk)

# ACTIVE PLUMBING SUPPLIES



-  Plumbing & Heating Supplies
-  Boilers
-  Radiators
-  Solar Panels & other Green Technologies
-  Water Softeners & Salt



1 Stanier Road | Porte Marsh | Calne | SN11 9PX  
[www.plumbingsuppliestscalne.co.uk](http://www.plumbingsuppliestscalne.co.uk)

**01249 818811**

Open: Mon - Friday 7.30am - 5pm & Sat 8am - 12pm

# ACTIVE

KITCHENS | BATHROOMS  
 DOMESTIC APPLIANCES

-  Bathrooms, Wet Rooms & Shower Rooms
-  Bespoke Kitchens
-  Granite, Silestone & Laminate Worktops
-  Washing Machines and Dishwashers
-  Kitchen Appliances, Integrated or Freestanding



**01249 813871**

Open: Mon - Friday 8am - 5pm & Sat 8am - 2pm

*For all your electrical needs:*

- Re-wiring ✓
- PAT Testing ✓
- Extra Sockets ✓
- Fault Finding ✓
- Lighting ✓
- Free Quotations ✓
- Electrical Installations ✓
- Testing & Inspection ✓
- Consumer Unit Changes ✓

**Nick Pocock  
 Electrical**

NICEIC APPROVED CONTRACTOR

T: 01249 263187 M: 07967 022446

[nrpelectrical@hotmail.co.uk](mailto:nrpelectrical@hotmail.co.uk)

[www.nrpelectrical.co.uk](http://www.nrpelectrical.co.uk)

## November 2023 Crossword



Epic, train themed, stay and play sessions at the Lansdowne Hall, Derry Hill.

We also do private parties



For active babies & beyond. Book your tickets at [www.traintimeuk.co.uk](http://www.traintimeuk.co.uk) & select the Calne session, or email [alex@traintimeuk.co.uk](mailto:alex@traintimeuk.co.uk) for further information.

[www.traintimeuk.co.uk](http://www.traintimeuk.co.uk)



### **Derry Hill home-based childcare and wrap around care**

- Caring for children from birth to 12yrs
- Early Years Pre-School Education (EYFS)
- Derry Hill Primary School drop off and pick up
- 15 and 30 hr free school entitlement vouchers
- Open from 7.30am to 6pm five days a week
  
- Friendly experienced staff • Outdoor Learning • Language Development Programmes • External trips • Animal care • Arts & Craft • Singing • Cooking • Nurturing environment • Fun and smiles •

To visit us and find out more please contact:

**Jane Clark**  
**07733 231735**  
Ofsted registered EY488061

## *Professional Window Cleaner*

*Simon Gibbs*

**All types of windows cleaned also conservatories and solar panels**

*Feel free to call or email for a quote*

**Sjgcleaning1@gmail.com**  
**Tel:07981 843201**





Expert Care.  
Individual Service.

Spectacles  
Contact Lenses  
Prescription Sunglasses  
3D Retinal Imaging (OCT)

Dedicated to providing professional eye care and spending time with patients to meet their visual needs.

Book your appointment online at  
[brignallopticians.co.uk](http://brignallopticians.co.uk)

33 New Road, Chippenham  
[brignallopticians.co.uk](http://brignallopticians.co.uk) | 01249 653292



## Contemporary Eco-style Holiday Home To Let in Porthtowan, North Cornwall

Located in an Area of Outstanding Natural Beauty, "Ding Dong" is a 5 minute walk from Porthtowan's beautiful sandy beach and stunning clifftop walks along the South West Coastal Path.

4 bedrooms, 3 bathrooms, sleeps 8  
Perfect for families, surfers and walkers

For details contact Jennifer on 07770 945080 or [jlamacraft@btinternet.com](mailto:jlamacraft@btinternet.com)